



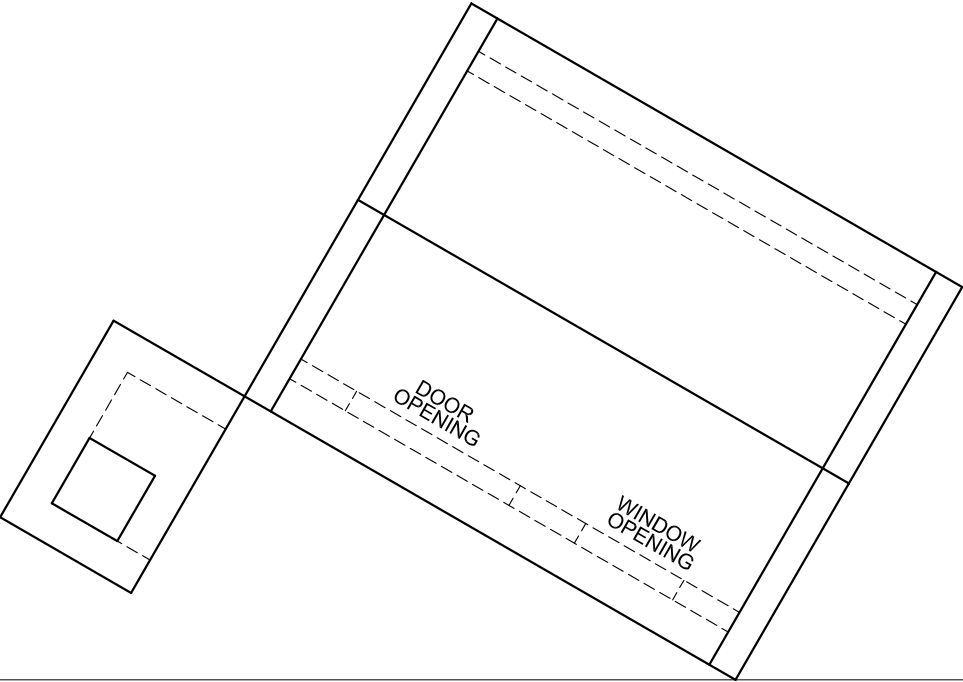
QUESTION 3: PERSPECTIVE

**Given:**  
Two views of a clubhouse with a built-in braai and the information needed to draw a two-point perspective drawing.  
PP – Picture Plane  
HL – Horizon Line  
GL – Ground Line  
SP – Station Point

**Instructions:**  
Complete the perspective drawing.

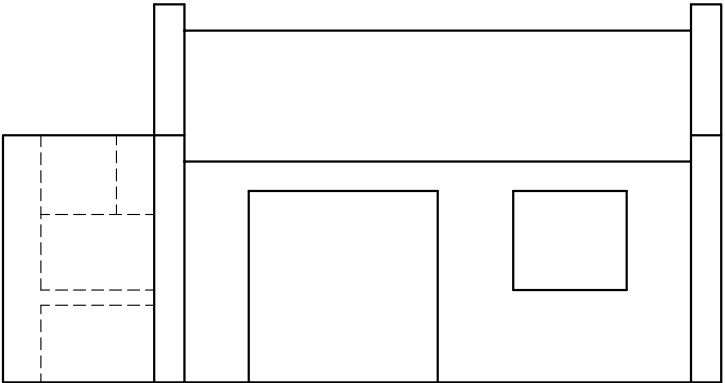
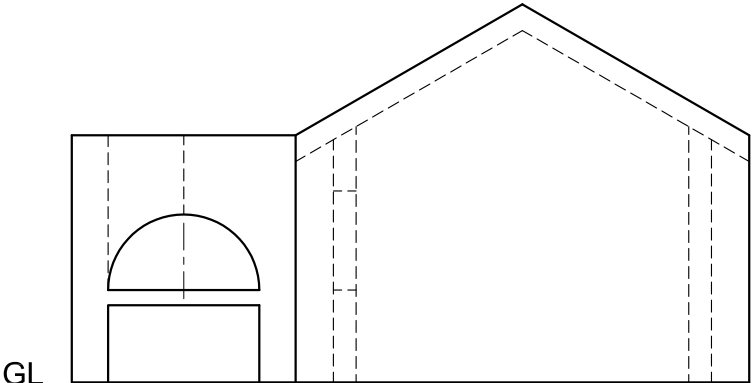
- Align the drawing sheet with the horizon line (HL).
- Locate and label the vanishing points.
- Show ALL visible detail inside the dwelling.
- NO hidden detail is required.
- Show ALL necessary constructions.

[36]



PP \_\_\_\_\_

HL \_\_\_\_\_



GL \_\_\_\_\_

+  
SP

ASSESSMENT CRITERIA				
CONSTRUCTION + VPs	6			
DWELLING (A)	17½			
BRAAI (B)	12½			
TOTAL	36			
EXAMINATION NUMBER				
EXAMINATION NUMBER				4